

【TY360 系列产品介绍】

- 常规通用三相三线电源滤波器;
General power line filter with three phase and three lines
- 良好的共模和差模抑制性能, 安装简单;
Excellent interference-suppression for CM and DM, easy to mount
- 采用高品质元件, 安全可靠。
High quality component ensure the safety and reliability of filters
- 广泛用于各种工业噪音环境。
Available for industrial noise environments



Specification

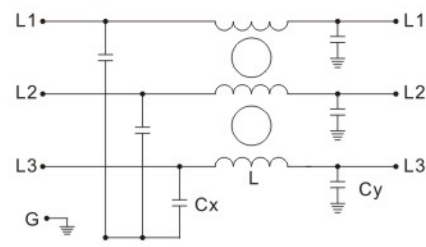
(规格表)

| 滤波器型号 | 端接方式 | 额定电流 | 额定电压 | 工作频率 | 耐压等级 | 绝缘电阻 | 工作温度 | 最大漏电流 |
|------------|-------------------|---------------|---------------|----------------|--|--------------------------------|-------------------|---------------------|
| PART No | Connection IN OUT | Rated current | Rated voltage | Line frequency | Hipot test Voltage | Insulation Resistance | Temperature Range | Max leakage current |
| TY360S-6 | | 6A | 250/440VAC | 50/60Hz | 线-线(L-L): 1450VDC/1Min 线-地(L-G): 2700VDC/1Min | 线-地(L-G): ≥100MΩ @500VDC | 25/085/21 | 1.5mA |
| TY360S-10 | | 10A | | | | | | 1.5mA |
| TY361S-6 | | 6A | | | | | | 1.5mA |
| TY361S-10 | | 10A | | | | | | 1.5mA |
| TY361W-6 | | 6A | | | | | | 1.5mA |
| TY361W-10 | | 10A | | | | | | 1.5mA |
| TY360M-20 | | 20A | | | | | | 2.5mA |
| TY360M-30 | | 30A | | | | | | 2.5mA |
| TY360M-40 | | 40A | | | | | | 2.5mA |
| TY360M-50 | | 50A | | | | | | 2.5mA |
| TY360M-80 | | 80A | | | | | | 2.5mA |
| TY360M-100 | | 100A | | | | | | 2.5mA |

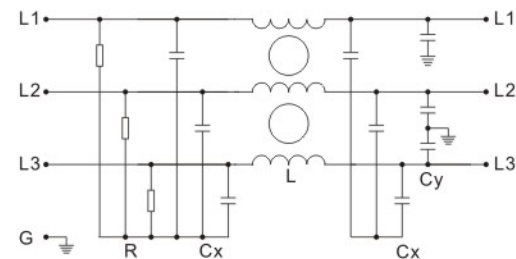
Schematic

电气原理图

TY361S /361W 系列



TY360系列



Insertion Loss

Tested@50 ohm system as IEC/CISPR :17

| 滤波器型号 | 共模衰减 (Comm.Mode) -in Mhz | | | | | | 差模衰减 (Diff.Mode) -in Mhz | | | | | |
|------------|--------------------------|------|-----|-----|-----|----|--------------------------|------|-----|-----|-----|----|
| | PART number | 0.15 | 0.5 | 1.0 | 5.0 | 10 | 30 | 0.15 | 0.5 | 1.0 | 5.0 | 10 |
| TY360S-6 | 31 | 43 | 47 | 55 | 61 | 50 | 17 | 20 | 25 | 61 | 60 | 51 |
| TY360S-10 | 30 | 37 | 45 | 55 | 60 | 46 | 16 | 27 | 30 | 56 | 66 | 60 |
| TY361S-6 | 26 | 35 | 38 | 41 | 42 | 37 | 9 | 19 | 25 | 41 | 39 | 34 |
| TY361S-10 | 13 | 22 | 27 | 38 | 40 | 36 | 4 | 10 | 15 | 36 | 36 | 30 |
| TY361W-6 | 26 | 35 | 38 | 41 | 42 | 37 | 9 | 19 | 25 | 41 | 39 | 34 |
| TY361W-10 | 13 | 22 | 27 | 38 | 40 | 36 | 4 | 10 | 15 | 36 | 36 | 30 |
| TY360M-20 | 34 | 35 | 38 | 49 | 57 | 46 | 25 | 46 | 48 | 59 | 69 | 55 |
| TY360M-30 | 30 | 38 | 38 | 47 | 54 | 46 | 26 | 51 | 48 | 56 | 60 | 50 |
| TY360M-40 | 29 | 35 | 38 | 45 | 52 | 47 | 23 | 39 | 45 | 51 | 59 | 54 |
| TY360M-50 | 23 | 32 | 37 | 38 | 50 | 46 | 22 | 40 | 45 | 46 | 56 | 50 |
| TY360M-80 | 26 | 35 | 38 | 47 | 42 | 37 | 19 | 29 | 45 | 41 | 49 | 34 |
| TY360M-100 | 19 | 26 | 37 | 48 | 40 | 36 | 17 | 20 | 35 | 36 | 46 | 30 |

Mechanical Specs

(安装尺寸图)

单位(Unit): mm

